

For Rent: City-Center Apartment near St. Stephen's Cathedral

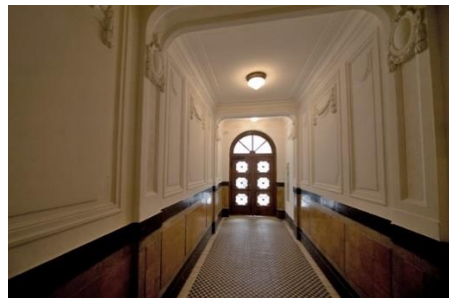
Spacious apartment with large windows overlooking a green and exceptionally quiet courtyard. In a beautifully preserved historic building with modernized apartments.

Location: 1010 Wien, Domgasse 8

Living Space: 157 m²

Layout: Living room with kitchen, 3 bedrooms, lobby, 2 bathrooms, storage rooms and a walk-in closet.

Total Rent / Month: € 3.490,- including maintenance costs and VAT



Domgasse is located right next to Stephansplatz - the center of Vienna. The Grünangerpark and the Mozarthaus (where Mozart worked from 1784 to 1787) are located there.

The house was completely renovated in 2004 and 2005 and a south-facing extension with generous glazing was realized, which leads into a large, bright, absolutely quiet and green courtyard.

The Apartment

Renovated apartment, 157 m², 2nd floor, with elevator. Living room with Loggia to the green garden (garden – view). 3 bedrooms (1 with en-suite-bath, 1 with walk-in closet). 2 bathrooms, 3 toilets, cellar compartment. Kitchen, extra utility room with washing machine and dryer. Unfurnished (Except kitchen and some smaller furniture).

Living room with kitchen:



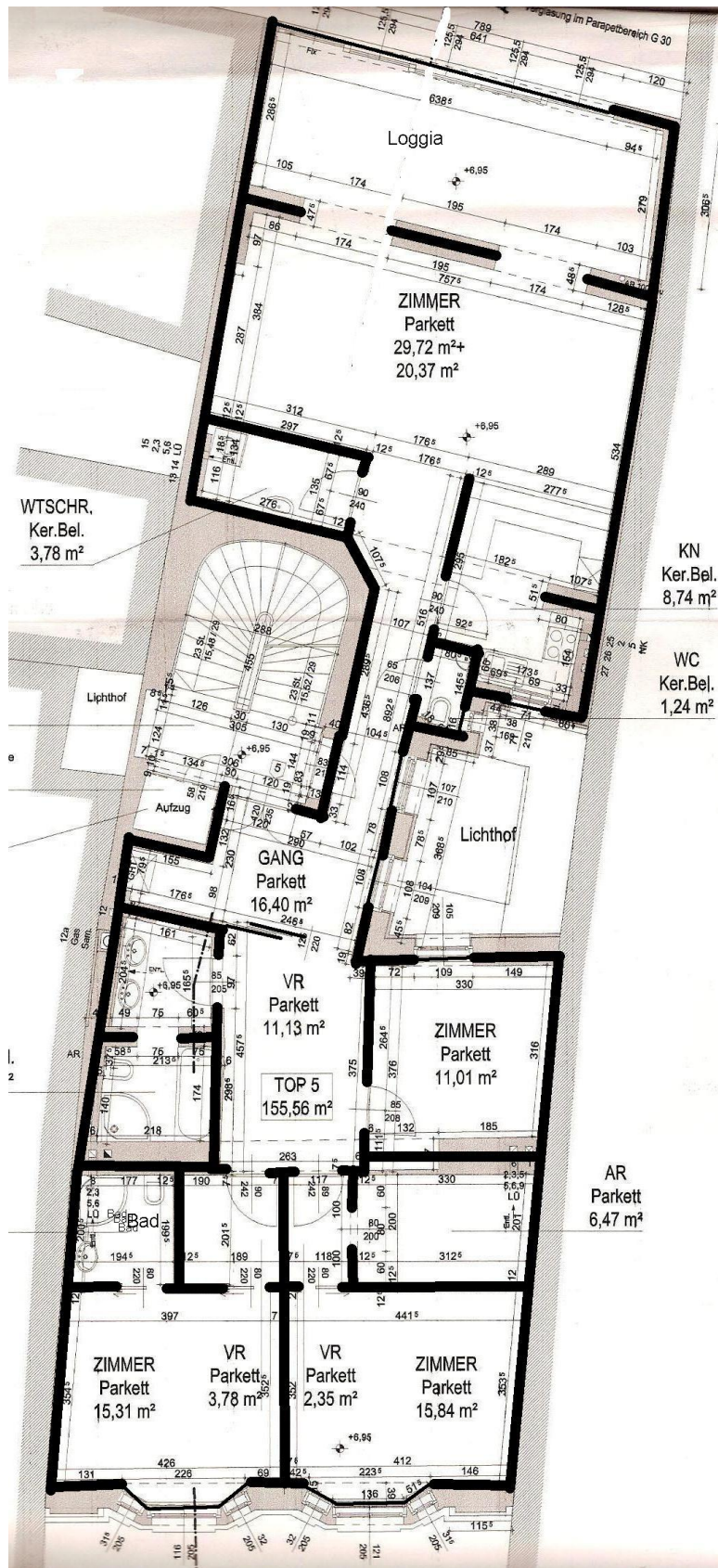
3 Sleeping Rooms + Clothing Room



2 Bathrooms (one attached to the master bedroom, one with bathtub) and a separate toilet

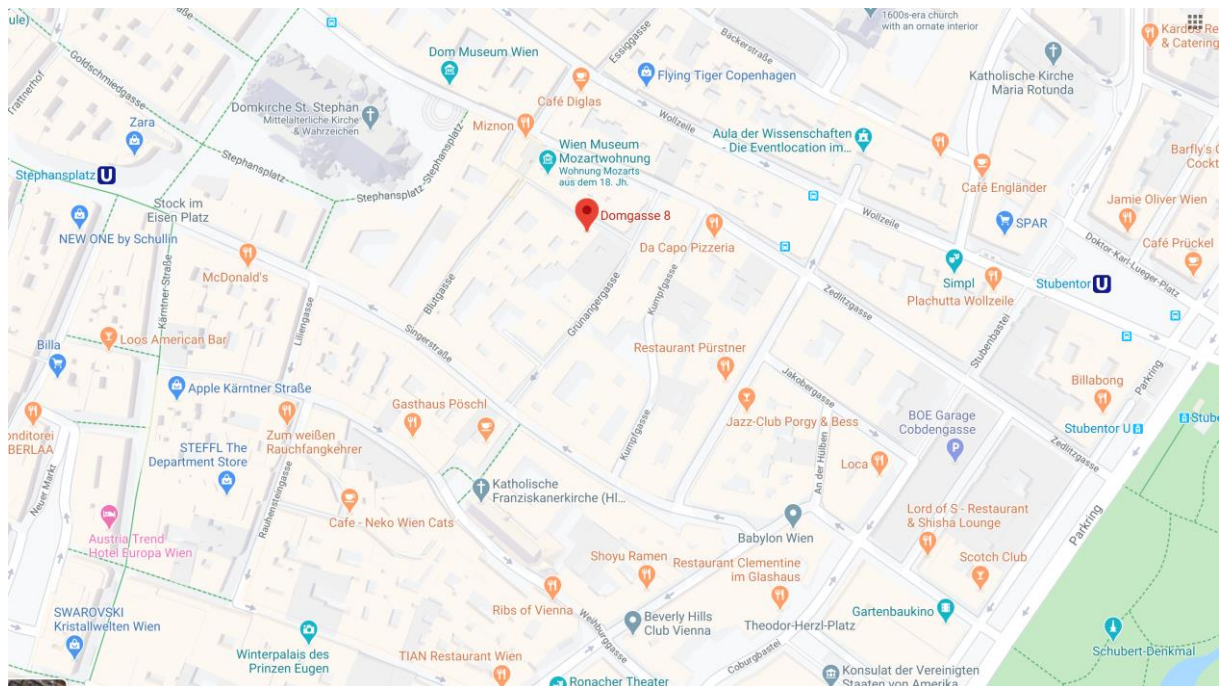


Plan living space:



Location

Domgasse is located in the so-called Blutgassenviertel: a unique cultural and natural gem of downtown Vienna. Only 2 minutes walking distance to Stephansplatz with the cathedral and the subway station U1. In the Kärntnerstrasse and Graben adjoining the Stephansplatz there are wonderful shops, good restaurants and bars as well as supermarkets. And of course the city offers a wide range of cultural activities. With a 5 minute walk you are near the Stadtpark, which guarantees enough space for leisure activities in the nature and invites you to take relaxing walks. A 10 minute walk takes you to the Vienna State Opera, the Hofburg and the Danube Canal. A perfect traffic connection is given. In addition to the parking possibilities around Domgasse, there is an underground car park 130 meters away.



Contact us

For more details please visit www.pfaffstaller.com or contact florian@pfaffstaller.com

Energy performance certificate of the house is available.

All information, photos and plans without guarantee.